



NOUAKCHOTT REGION

2 PILOT BUS LINES FOR DISADVANTAGED NEIGHBORHOODS IN THE CITY OF NOUAKCHOTT

PROJECT BACKGROUND



Location : Nouakchott, Mauritania

Adaptation issues targeted: Improving the quality of life / access to public services / economic and social inclusion of vulnerable populations.

Project initiators and associated partners: The Nouakchott Region (NR) with support from FMDV, Grand Paris Sud (GPS), and CIEDEL, and co-financed by the European Union and the FFEM

Strategic framework of the project: Supporting the Nouakchott region in sustainable, resilient and equitable development program (ARENDRE) and the Sustainable urban mobility plan (PMUD)

Project budget: 48 000 000 MRU – 1 200 000 €

CONTEXT AND CHALLENGES

Nouakchott is undergoing rapid, often unplanned expansion, which has led to the emergence of peripheral neighborhoods where vulnerable populations reside. These areas have limited access to basic infrastructure and are not served by public transportation. Additionally, these neighborhoods face safety risks, making safe and affordable transport options essential for improving the living conditions of the most vulnerable populations.

In response to these challenges, the ARENDRE project was launched to support Nouakchott's transition in urban and energy sectors, focusing on improving mobility in peripheral neighborhoods. Funded by the European Union and supported by international partners such as FMDV, Grand Paris Sud, and the Center for International Studies on Local Economic Development (CIEDEL), the project aims to strengthen the city's climate resilience while enhancing living conditions, particularly for women and girls.

As part of the project, a development strategy was adopted with the Sustainable Urban Mobility Plan (PMUD). In October 2023, the Nouakchott region, in partnership with the Public Transport Company (STP), launched two pilot bus lines serving the peripheral neighborhoods. These lines aim to improve residents' access to transportation services, with particular attention to women and youth. This initiative, which will conclude in December 2024, aims to sustain the pilot actions implemented and expand them on a larger scale. The goal is to ensure the long-term operation of these two bus lines and to scale up by extending services to a new peripheral neighborhood.

This project also seeks to amplify the benefits of implementing public transport for vulnerable populations, especially women. Finally, innovative "green bus" solutions will be explored in future phases of the project.

OBJECTIVES

1. Improve and Sustain Mobility Services:

- Increase ridership on bus lines, adjust service levels (frequency, schedules, stops)
- Address the needs of expanding neighborhoods
- Develop user information tools.

2. Support Vulnerable Populations:

- Provide training for women in transport professions
- Boost local businesses with kiosks at bus stops
- Improve access to buses for specific needs, like school trips.

3. Reduce Environmental Impact:

- Explore the introduction of eco-friendly buses
- Raise awareness about air quality
- Install green bus stops.

4. Enhance Safety:

- Launch road safety awareness programs
- Host safety workshops for women in public transportation.





PROPOSED ACTIONS

1

Adjust bus line service offerings

- Add an extra bus during peak hours and expand the number of stops based on demand.
- Assess and address the needs of new neighborhoods.
- Support economic activity with kiosks at bus stops.
- Promote the mobile app and enhance information in buses and at stops.

2

Mobility as an inclusive tool for women

- Tailored information to encourage bus use among women.
- Training programs for women in transport careers.
- Enhanced road safety initiatives and awareness specifically for women.
- Providing buses for specific trips, such as school outings and community events.

3

Enhance the user experience

- Introducing a green bus.
- Redesigning and building green bus shelters with vegetated urban furniture.

BUDGET

	Feasibility studies		Implementation		Total	
	Euros	MRU	Euros	MRU	Euros	MRU
Ensure the sustainability of current bus lines	80 000	3,200,000	420 000	16,800,000	500 000	20,000,000
Actions in favor of vulnerable populations as beneficiaries of mobility services			100 000	4,000,000	150 000	6,000,000
Reduce the environmental impact of public transport	120 000	4,800,000	370 000	14,800,000	500 000	20,000,000
Strengthen transport safety, prevent risky behavior			45 000	1,800,000	50 000	2,000,000
Grand total					1 200 000	48,000,000





BENEFITS AND CO-BENEFITS

Economic benefits:



- **Accessibility and Employment:** Improved access to job centers and the creation of jobs in transportation and retail, with opportunities for local vendors around bus lines (kiosks at stops).
- **Bus-Taxi Synergy:** Enhanced connections between buses and taxis through better understanding of passenger flow.
- **Training and Innovation:** Training local teams in maintenance roles and the use of new technologies, including pilot projects for green buses and passenger information apps.

Social benefits:



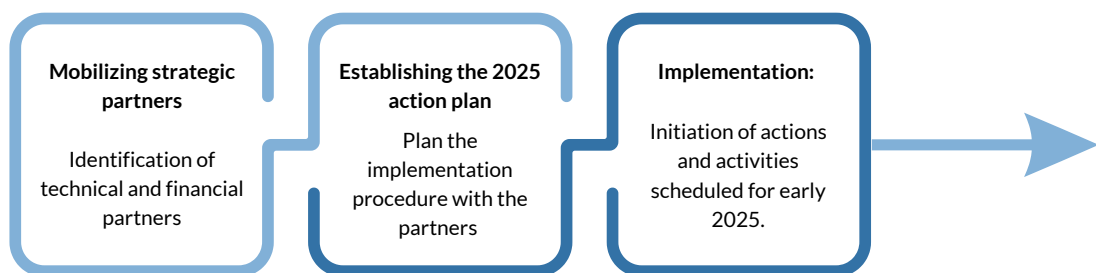
- **Safe Access:** Easier access to universities and jobs for young people, along with improved safe mobility for vulnerable populations (women and youth).
- **Social Inclusion:** Greater access to educational and social opportunities, integrating residents from new neighborhoods into the development of bus lines.

Environmental benefits:



- **Implementation of Green Buses:** Launching green buses on regional lines.
- **Solar Energy Use:** Utilizing solar energy for lighting bus shelters and raising awareness among communities, especially children, about environmental issues and the importance of eco-friendly public transport.

NEXT STEPS



FOR MORE INFORMATION

Contacts

Nouakchott Région

Mme. Fatimetou BOUKHREISS
Head of the Transport and Environment Department of the Nouakchott Region
boukhreiss.fatimetou@gmail.com

FMDV – Global Fund for Cities
Development

M. Thomas BEAUCORAL
Project officer tbeaucoral@fmdv.net

